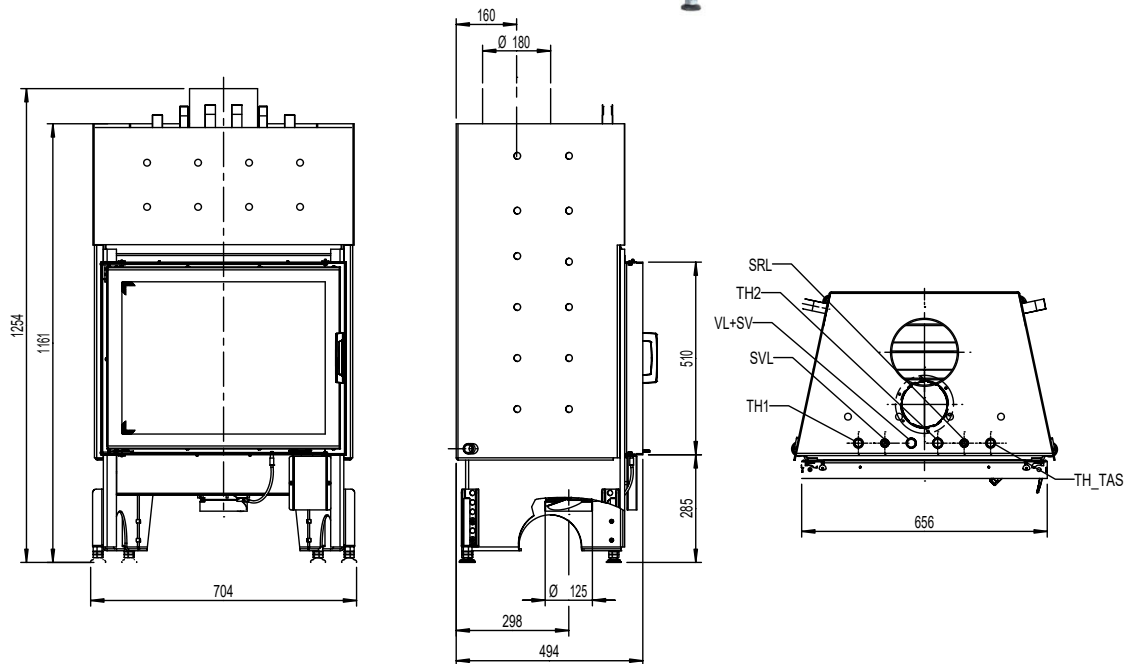
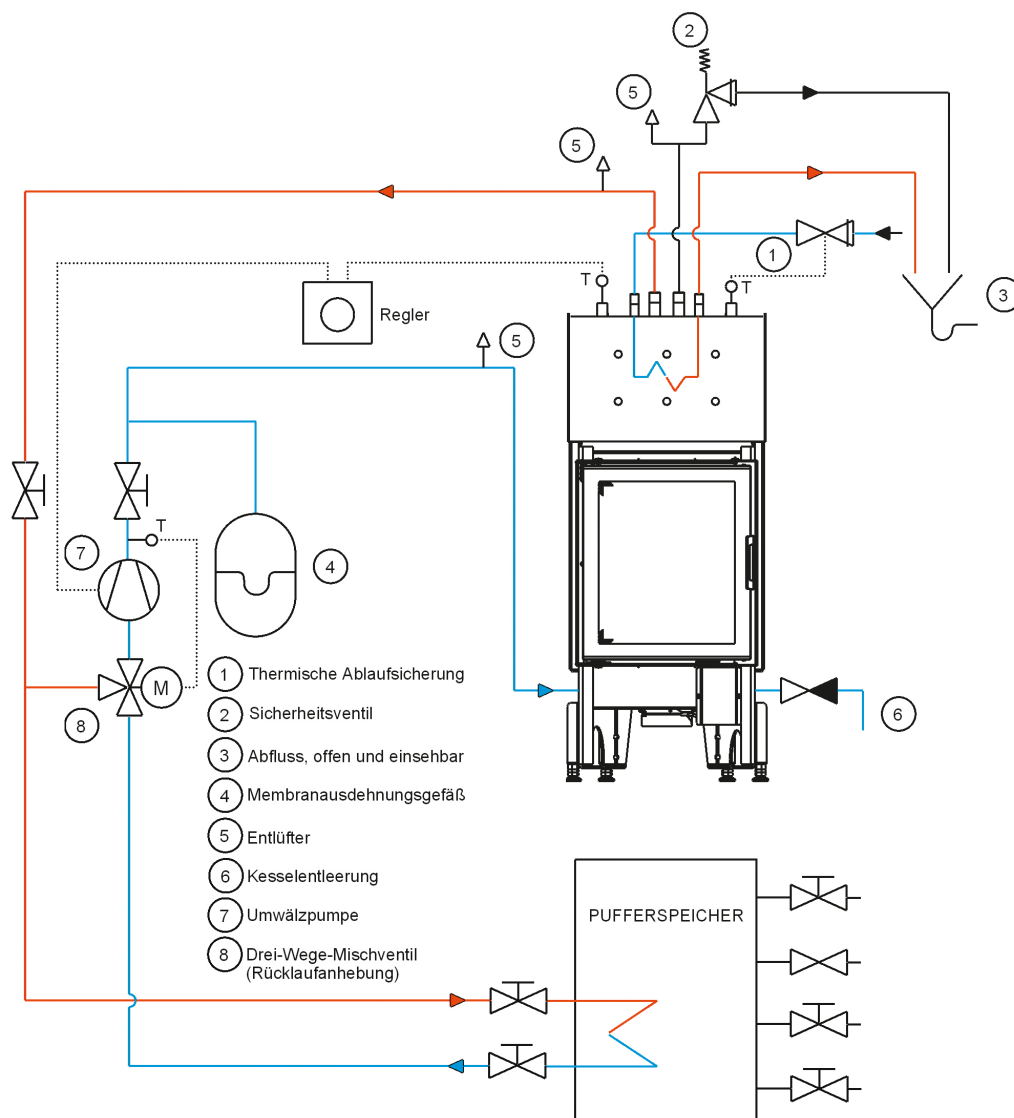


# 65X51-K-AQUA- HEAT





### Dimensions and weight

Height from [mm]	1254
Height to [mm]	1454
Width (body installation dimension) [mm]	656
Depth [mm]	494
Weight, basic appliance [kg]	202
Weight, HMS [kg]	
Door frame height [mm]	510
Door frame width [mm]	656
Combustion chamber height [mm]	452
Combustion chamber width [mm]	542/387
Combustion chamber depth [mm]	232
Flue pipe outlet, diameter [mm]	180
Outside air connection diameter [Ø mm]	125
dR Distance rear [mm]	0
dS1 Distance left [mm]	0
dS2 Distance right [mm]	0
dP Radiation front [mm]	800
dF Radiation to the floor [mm]	not applicable
dB Distance bottom [mm]	0
dL 1 Radiation left [mm]	not applicable

- not available

Dimensions and weight	
dL 2 Radiation right [mm]	not applicable
Safety distance to insulation, rear [mm]	60
Safety distance to insulation, right [mm]	60
Safety distance to insulation, floor [mm]	0
Insulation material thickness to installation base [mm]	0
Insulation material thickness to ceiling [mm]	-
Insulation material, left [mm]	40
Insulation material thickness, right [mm]	40
Insulation material, rear [mm]	40
Cross-section, convection outlet [cm <sup>2</sup> ]	700
Cross-section, convection inlet [cm <sup>2</sup> ]	700
Max. amount of firewood fuel to be deposited [kg]	2.5
Ceramic flues - max. length [m]	-
Minimum distance from non-flammable materials [mm]	50
Output	
Water heat output	9.2
Nominal heat efficiency, air [kW] (AquaHeat only)	3.3
Nominal heat efficiency [kW]	12
Maximum water operating pressure [bar]	3
permissible fuel filling quantity [Kg]	2.5
Minimum fuel throughput [kg/h]	-
Maximum fuel throughput [kg/h]	3.26
Water capacity [l] (AquaHeat only)	49
Permissible operating pressure max. [bar] (AquaHeat only)	3
Permissible flow temperature max [°C] (AquaHeat only)	105
Permissible operating pressure safety heat exchanger max. [bar] (AquaHeat only)	3
Flow pipe connections / return pipe connections (AquaHeat only)	3/4 / 3/4
Minimum heat output [kW]	-
Maximum heat output [kW]	12
Energy efficiency class	A+
Circulating air cross-section with metal heat recovery surface [cm <sup>2</sup> ]	700
Circulating air cross-section without metal heat recovery surface [cm <sup>2</sup> ]	700
Nominal water heat output [kW]	9.2
Combustion air requirement [m <sup>3</sup> /h]	46.08
Equipment	
Hinged door	Yes
Sliding door	No
Double pane	No
Hypocaust in compliance with technical regulations	Yes
Data for the chimney sweep	
Exhaust gas mass flow [g/s]	12.2
Flue gas temperature [°C]	265
Minimum delivery pressure at nominal heat output [Pa]	12