

NEW!
"SUPER EASY"
FIREPLACE
CONSTRUCTION
BOARD

FIREPLACE INSERT
48X72X51 S3 2.0
CAN BE
INSTALLED WITH
FIREPLACE
CONSTRUCTION
BOARD
„SUPER EASY“



Highly
efficient!

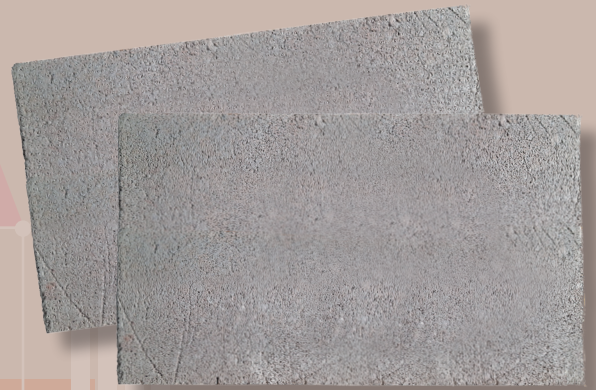


AUSTROFLAMM

www.austroflamm.com

"SUPER EASY" FIREPLACE CONSTRUCTION BOARD

Making creative solutions easy



The brand-new hydraulically bonded SUPER EASY fireplace construction board from Austroflamm is perfect for the assembly of modern and individual fireplace systems. Any shape is possible - there are almost no limits placed on your creativity.

Asbestos- and calcium silicate fibre-free this new product is from the point of view of environmental protection and health and safety a great choice and in the long term the perfect material for fireplace systems. Waste 100% recyclable!

THE ADVANTAGES:

- **LARGE SIZED** 1000x500x35mm
- **CUT** with circular hand saw or keyhole saw
- **CLENCH** with all commercially available adhesive mortars, Universal 500 or bonding emulsion
- **SCREWABLE** on edges and faces

TECHNISCHE DATEN: KAMINBAUPLATTE EASY

TECHNICAL DATA:	
Size	1,000 x 500 mm
Thickness	35 mm
Bulk density	0.7 kg/dm ³
Compressive strength at 110 °C	approx. 4 N/mm ²
Thermal conductivity	approx. 0,32 W/mk at 180 °C
Specific thermal capacity	1.5 J/kgK
Temperature-resistant up to	600°C
Fire protection classification	A1
Working	sawing, milling, drilling, break, screwable
Use	easy construction of warm surfaces on fireplaces

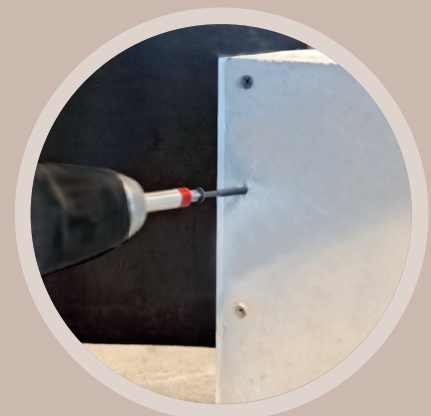
ORDERING INFORMATION: SUPER EASY FIREPLACE CONSTRUCTION BOARD Item number: 776754,
1 pallet = 18 pieces



⇒ CUT WITH CIRCULAR HAND SAW



⇒ CUT WITH KEYHOLE SAW



⇒ SCREW